

MONTHLY MEMBERSHIP PROGRESS REPORT

District 322 D

Results as of: 1/31/2025

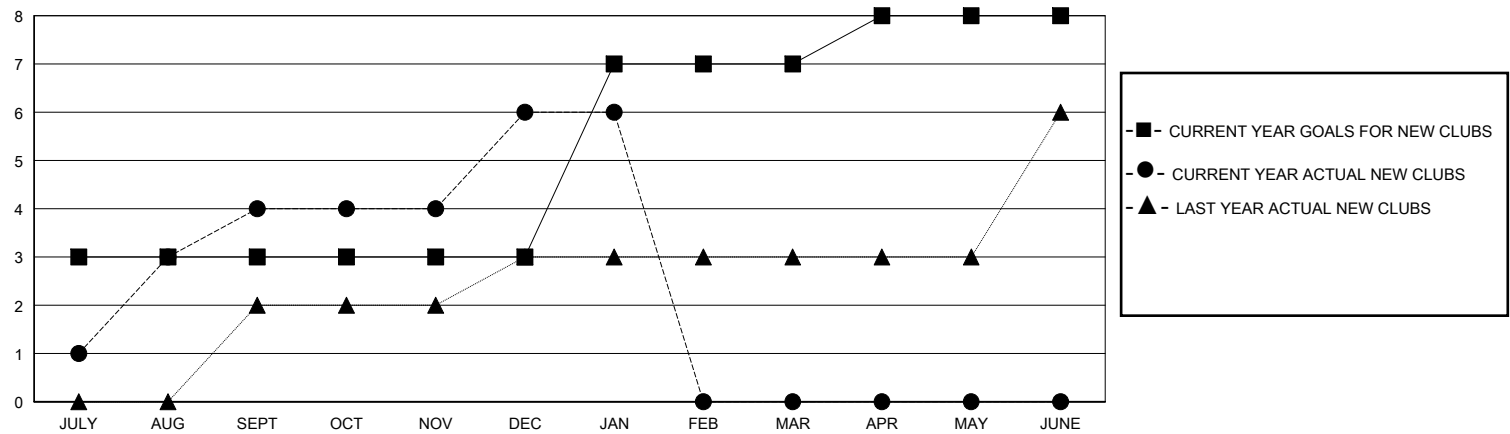
GMT:

LOCATION INDIA

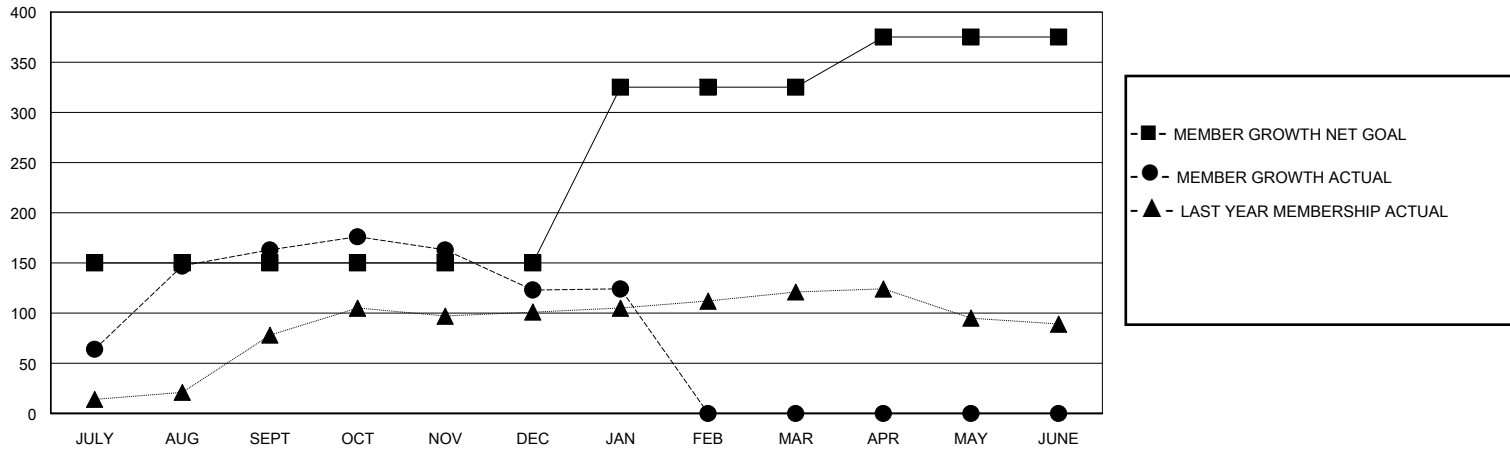
GMT CA

| Clubs                 |               |           |               | Members               |                        |                      |                                              |
|-----------------------|---------------|-----------|---------------|-----------------------|------------------------|----------------------|----------------------------------------------|
| RESULTS FOR 2024-2025 |               |           |               | RESULTS FOR 2024-2025 |                        |                      |                                              |
| QUARTER               | NEW CLUB GOAL | NEW CLUBS | DROPPED CLUBS | QUARTER               | MEMBER GROWTH NET GOAL | MEMBER GROWTH ACTUAL | DROPPED MEMBERS ACTUAL (including transfers) |
| JULY/AUG/SEPT         | 3             | 4         | 2             | JULY/AUG/SEPT         | 150                    | 235                  | 69                                           |
| OCT/NOV/DEC           | 0             | 2         | 0             | OCT/NOV/DEC           | 0                      | 103                  | 138                                          |
| JAN/FEB/MAR           | 4             | 0         | 0             | JAN/FEB/MAR           | 175                    | 8                    | 6                                            |
| APR/MAY/JUNE          | 1             | 0         | 0             | APR/MAY/JUNE          | 50                     | 0                    | 0                                            |

GOALS AND ACTUAL NEW CLUBS CUMULATIVE



GOALS AND ACTUAL MEMBERS CUMULATIVE



|                  |                                                           |                                 |                |
|------------------|-----------------------------------------------------------|---------------------------------|----------------|
| DROPPED CLUBS: 2 | 50 CLUBS OF 76 ADDED 1 OR MORE NEW MEMBERS                | GENDER DISTRIBUTION             |                |
|                  |                                                           | MALE                            | 2,001 (70.51%) |
|                  |                                                           | FEMALE                          | 837 (29.49%)   |
| DROPPED MEMBERS  | <a href="#">CLICK HERE FOR CUMULATIVE MEMBERSHIP DATA</a> | TOTAL FAMILY UNIT MEMBERS       |                |
| DECEASED         |                                                           | 0                               |                |
| CLUB CANCELLED   |                                                           | FAMILY MEMBERS PAYING HALF DUES |                |
| OTHER            |                                                           | 0                               |                |
| TOTAL            |                                                           |                                 |                |